

HIGHLANDER

2009 Quick Reference Guide



2009 Highlander

This *Quick Reference Guide* is a summary of basic vehicle operations. It contains brief descriptions of fundamental operations so you can locate and use the vehicle's main equipment quickly and easily.

The *Quick Reference Guide* is not intended as a substitute for the *Owner's Manual* located in your vehicle's glove box. We strongly encourage you to review the *Owner's Manual* and supplementary manuals so you will have a better understanding of your vehicle's capabilities and limitations.

Your dealership and the entire staff of Toyota Motor Sales, U.S.A., Inc. wish you many years of satisfied driving in your new Highlander.

! A word about safe vehicle operations

This *Quick Reference Guide* is not a full description of Highlander operations. Every Highlander owner should review the *Owner's Manual* that accompanies this vehicle.

Pay special attention to the boxed information highlighted in color throughout the *Owner's Manual*. Each box contains safe operating instructions to help you avoid injury or equipment malfunction.

All information in this *Quick Reference Guide* is current at the time of printing. Toyota reserves the right to make changes at any time without notice.

INDEX

OVERVIEW

Engine maintenance	9
Fuel tank door release and cap	8
Hood release	8
Indicator symbols	4-5
Instrument cluster	4
Instrument panel	2-3
Keyless entry¹	6
Light control-Instrument panel	9
Smart Key system^{1,2}	7

FEATURES/OPERATIONS

Air Conditioning/Heating	20-22
Audio	24-25
Auto lock functions¹	11
Automatic Transmission	10
Clock	22
Cruise control	23
Cup holders	27
Door locks	11
Door-Power back	12
Downhill Assist Control system (DAC)	26
Garage door opener (HomeLink®) ³	23
Hill-start Assist Control (HAC)	27
Lights¹ & turn signals	16
Moonroof	12
Multi-information display²	18
Parking brake	11
Power outlets-12V DC	17
Power outlets-115V AC	17
Rear seat entertainment system	26
Seat adjustments-Front	13
Seat adjustments-Rear	13
Seat heaters	22
Seats-Folding down second row seats	15
Seats-Head restraints	14
Seats-Removing Center-Stow™ second row seat	14
Seats-Stowing third row seats	14
Steering lock release	11
Steering wheel controls	25
Telephone controls (Bluetooth®)	19
Tilt and telescopic steering wheel	12
Windows-Power	18
Windshield wipers & washers	15

SAFETY AND

EMERGENCY FEATURES

Doors-Child safety locks	29
Seatbelts	28
Seatbelts-Shoulder belt anchor	29
Spare tire & tools	29
Tire Pressure Monitoring (warning) System	28

¹ Visit your Toyota dealer for information on customizing this feature.

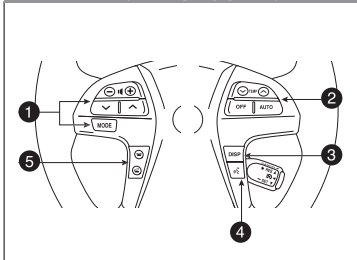
² Programmable by customer. Refer to the Owner's Manual for instructions and more information.

³ HomeLink® is a registered trademark of Johnson Controls, Inc.

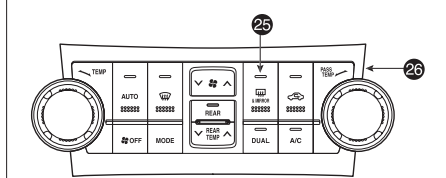
OVERVIEW

Instrument panel

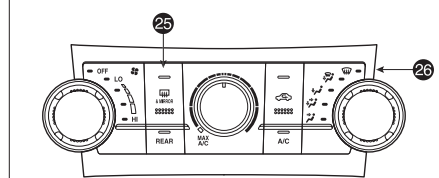
Steering wheel controls (if equipped)



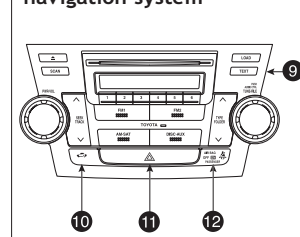
Automatic Air Conditioning



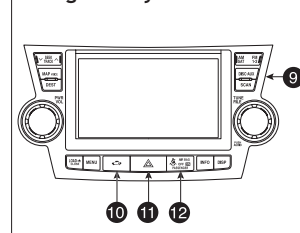
Manual Air Conditioning



Vehicles without navigation system



Vehicles with navigation system



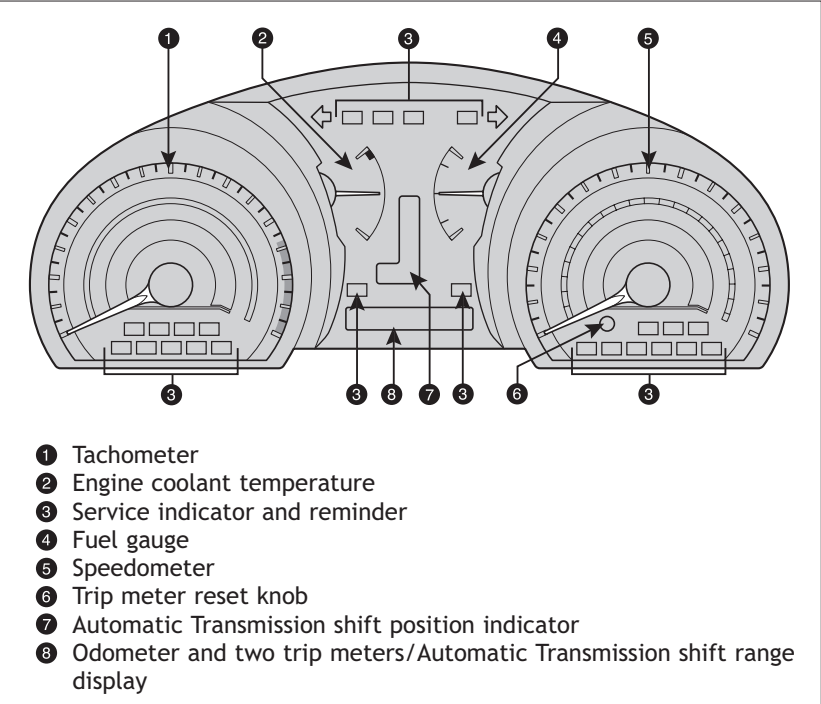
- 1 Steering wheel audio controls¹
- 2 Steering wheel climate controls¹
- 3 Multi-information display button¹
- 4 Voice command button¹
- 5 Telephone controls^{1,2}
- 6 Headlight and turn signal controls/Headlight, turn signal and front fog light controls¹
- 7 Wiper and washer controls
- 8 Multi-information display¹
- 9 Audio system or navigation system-integrated audio system^{1,2}
- 10 Theft deterrent system/Engine immobilizer indicator¹
- 11 Emergency flasher button
- 12 "AIR BAG ON" and "AIR BAG OFF" indicator and front passenger seatbelt reminder lights
- 13 Power back door main switch¹
- 14 "ENGINE START STOP" button (Smart Key)¹
- 15 VSC/TRAC OFF switch

- 16 Tire Pressure Monitoring (warning) System
- 17 Cruise control
- 18 Ignition (standard key)
- 19 Tilt and telescopic steering lock release
- 20 Power back door button¹
- 21 Instrument panel light control
- 22 115V AC Power outlet ON/OFF switch¹
- 23 Windshield wiper de-icer switch¹
- 24 Power rearview mirror control
- 25 Outside rearview mirror¹/Rear window defogger button
- 26 Air Conditioning controls

¹ If equipped

² For vehicles with a navigation system, refer to the "Navigation System Owner's Manual."

Instrument cluster



Indicator symbols

For details, refer to “Indicators and warning lights,” Section 2-2, 2009 Owner’s Manual.

- BRAKE** Brake system warning¹
- Driver seatbelt reminder (alarm will sound if speed is over 12 mph)
- Front passenger seatbelt reminder (alarm will sound if speed is over 12 mph)
- Charging system warning¹
- Front passenger occupant classification or front passenger airbag ON/OFF indicator¹
- Low engine oil pressure warning¹
- Malfunction/Check Engine indicator¹

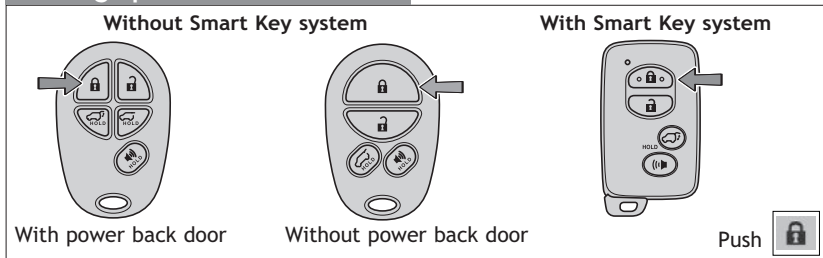
¹ If indicator does not turn off within a few seconds of starting engine, there may be a malfunction. Have vehicle inspected by your Toyota dealer.

- MAINT REQD** Engine oil replacement reminder¹
- Low fuel level warning
- Open door warning
- Airbag SRS warning¹
- Master warning
- A/T OIL TEMP** Automatic Transmission fluid temperature warning¹
- Low Tire Pressure Warning¹
- Electric power steering system warning¹
- Low windshield washer fluid level warning¹
- Theft deterrent/Engine immobilizer system indicator
- Headlight low/high beam indicator
- Turn signal indicator
- Tail light indicator
- Front fog light indicator
- Slip indicator/Hill-start Assist Control indicator/Downhill Assist Control indicator¹
- Vehicle Stability Control OFF indicator¹
- SNOW** SNOW indicator
- CRUISE** Cruise control indicator²
- Downhill Assist Control indicator¹
- ABS** Anti-lock Brake System warning¹
- TRAC OFF** Traction control OFF indicator¹

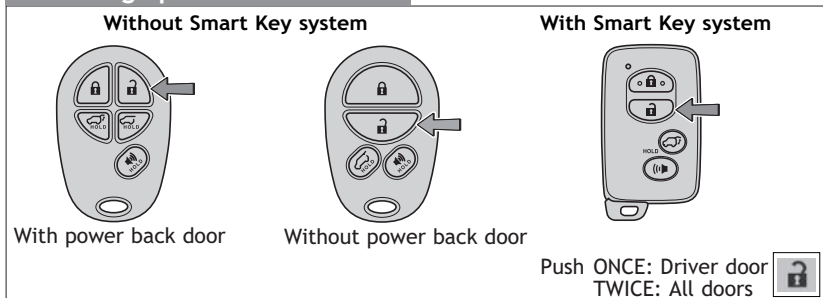
² If this light flashes, refer to “Cruise control,” Section 2-4, 2009 Owner’s Manual.

Keyless entry

Locking operation

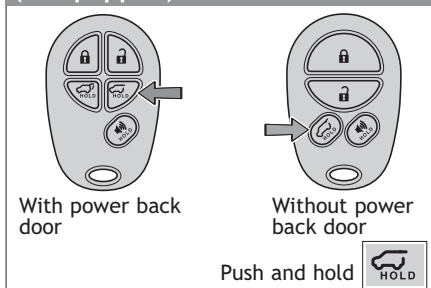


Unlocking operation

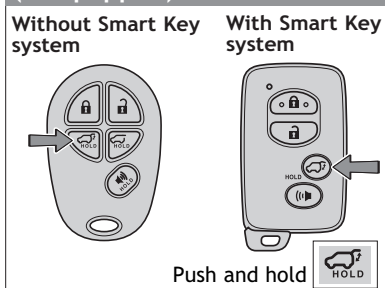


NOTE: If a door is not opened within 30 seconds of unlocking, all doors will relock for safety.

Glass hatch operation (if equipped)



Power back door operation (if equipped)

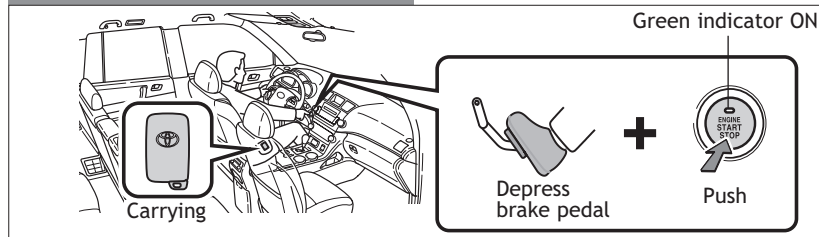


Panic button



Smart Key system (if equipped)

Start function



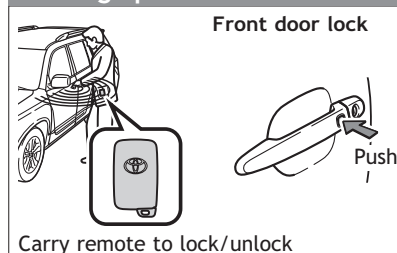
NOTE: Gear shift lever must be in Park and brake pedal depressed.

Power (without starting engine)

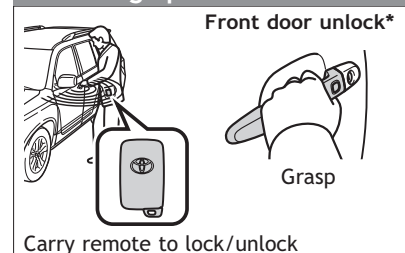
Without depressing the brake pedal, pressing the “ENGINE START STOP” switch will change the operation mode in succession from:

ACC	Accessories such as the radio will operate.
ON	Power ON; the engine not running.
OFF	All systems OFF.

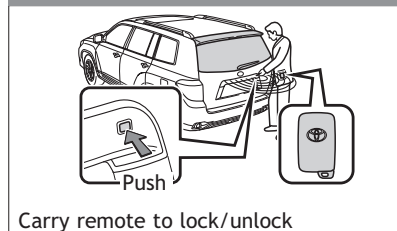
Locking operation



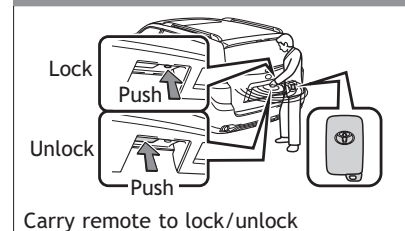
Unlocking operation



Glass hatch unlock



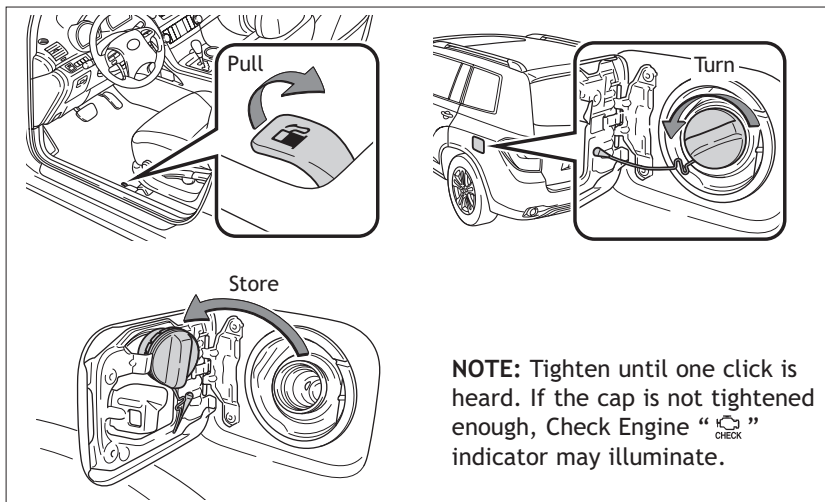
Back door lock/unlock



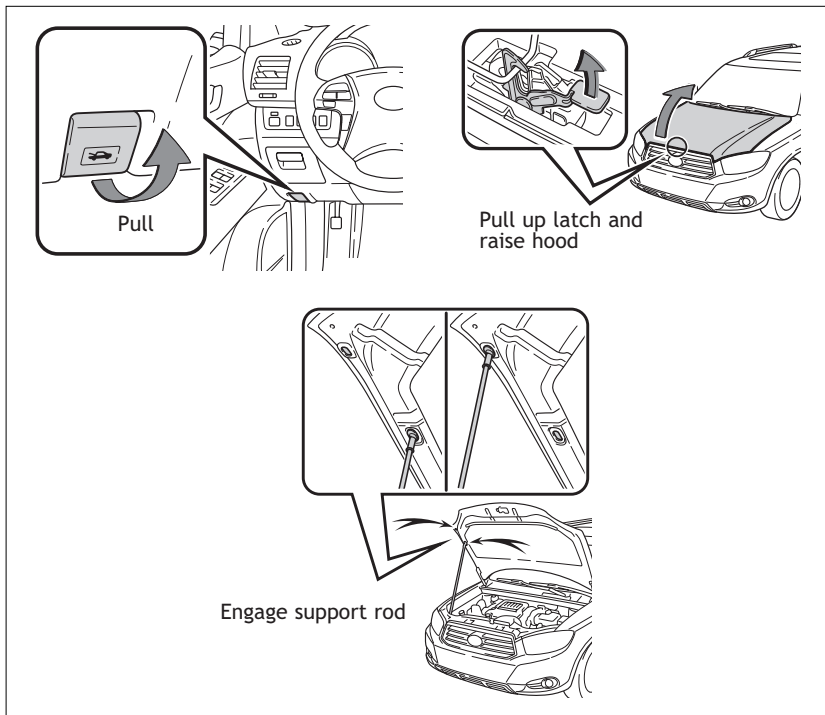
* Driver door unlocking function can be programmed to unlock driver door only, or all doors. Grasping passenger door handle will unlock all doors.

NOTE: Doors may also be locked/unlocked using remote.

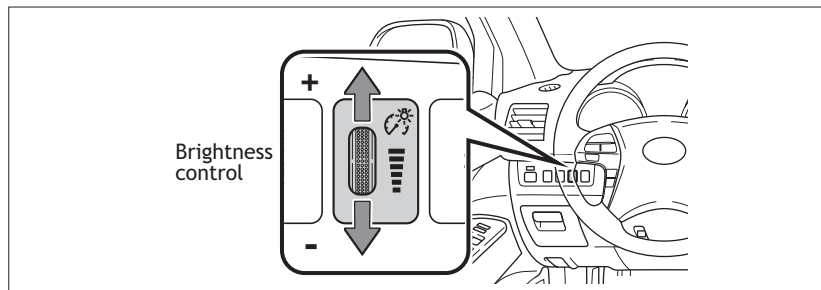
Fuel tank door release and cap



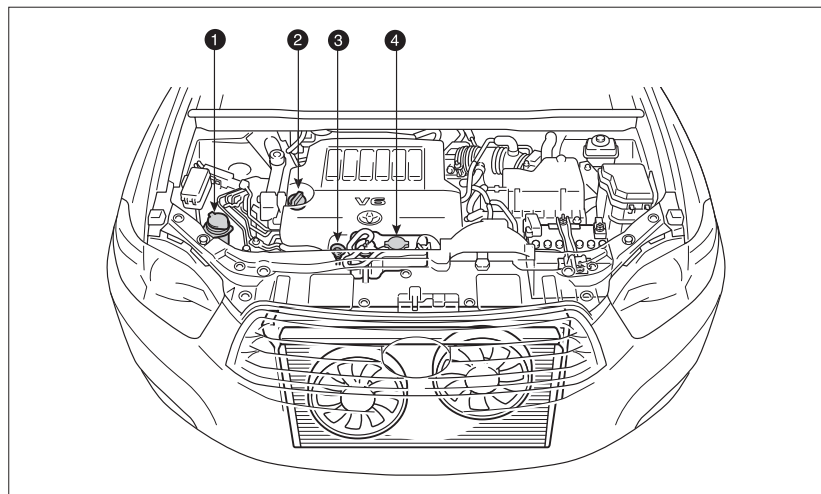
Hood release



Light control-Instrument panel



Engine maintenance

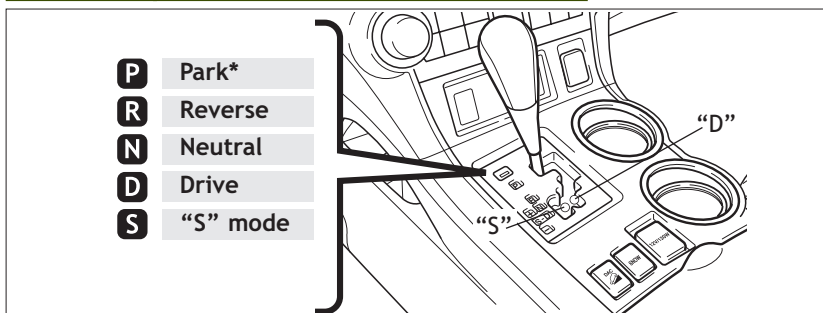


- 1 Windshield washer fluid tank
- 2 Engine oil filler cap
- 3 Engine oil level dipstick
- 4 Engine coolant reservoir

Note: Regularly scheduled maintenance, including oil changes, will help extend the life of your vehicle and maintain performance. Please refer to the “Owner’s Warranty Information Booklet,” “Scheduled Maintenance Guide” or “Owner’s Manual Supplement.”

FEATURES/OPERATIONS

Automatic Transmission



* The ignition switch must be "ON" and the brake pedal depressed to shift from Park.

"S" (Sequential) mode

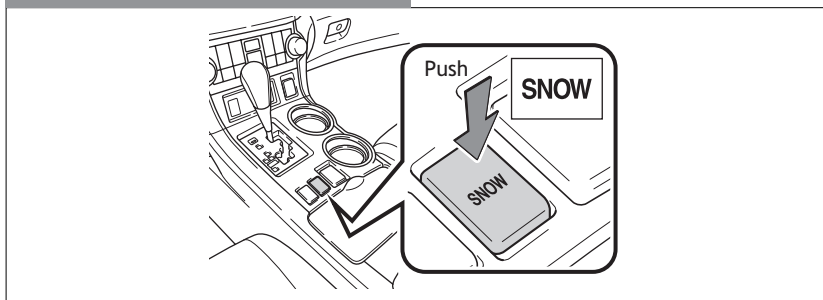
Shift the shift lever to "S" position from "D" position.

Floor shift type:

- +: Upshift (push and release)
- : Downshift (pull and release)

Downshifting increases power going uphill, or provides engine braking downhill. For best fuel economy during normal driving conditions, always drive with the shift lever in the "D" position.

Snow mode



The snow mode prevents sudden acceleration on slippery surfaces. Use in snowy or icy road conditions.

Auto lock functions

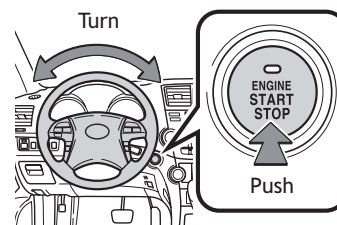
Automatic door locks can be programmed to operate in two different modes, or turned OFF.

- Doors lock when shifting from Park.
- Doors unlock when shifting into Park.

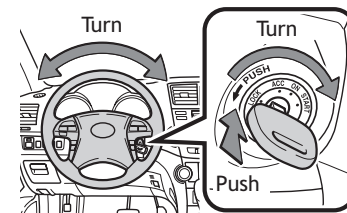
Refer to the *Owner's Manual* for more details.

Steering lock release

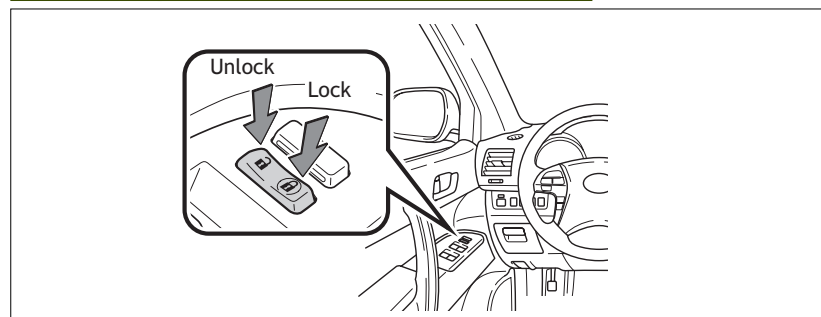
Smart Key system



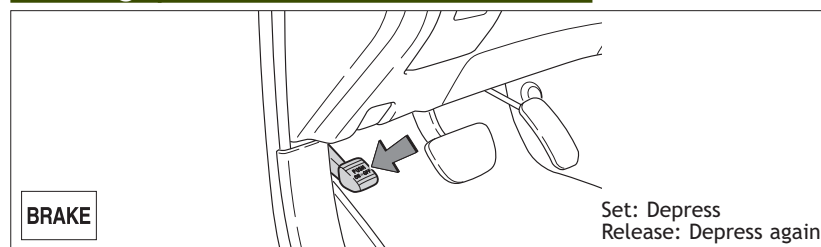
Without Smart Key system



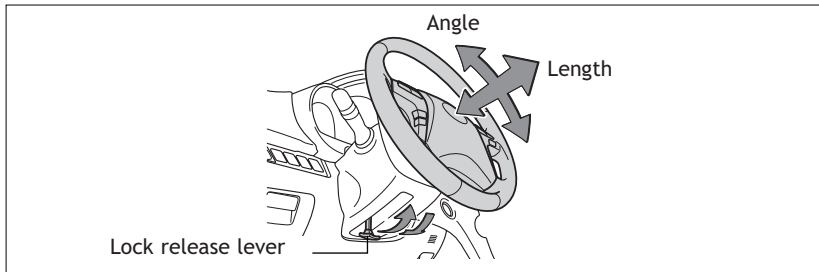
Door locks



Parking brake



Tilt and telescopic steering wheel

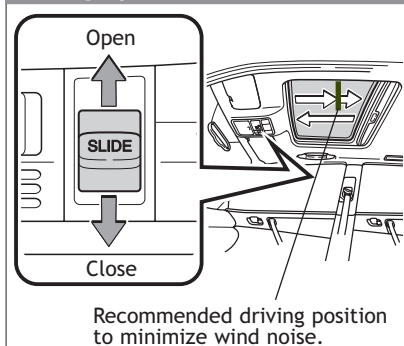


Hold wheel, push lever down, set angle and length, and return lever.

Note: Do not attempt to adjust while the vehicle is in motion.

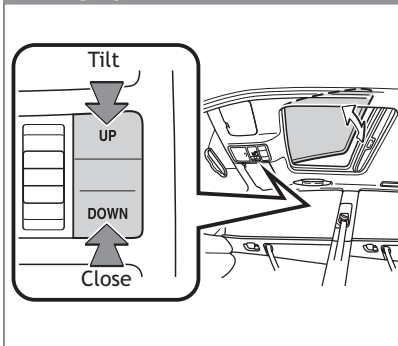
Moonroof (if equipped)

Sliding operation



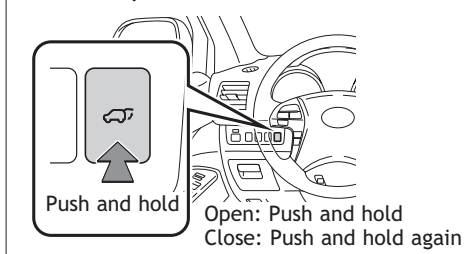
Recommended driving position to minimize wind noise.

Tilting operation

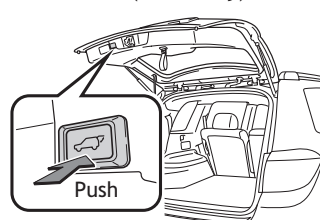


Door-Power back (if equipped)

Instrument panel



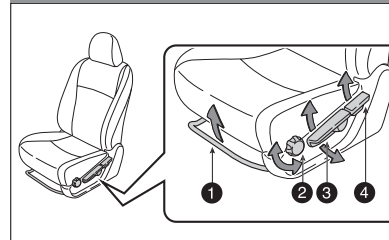
Back door (close only)



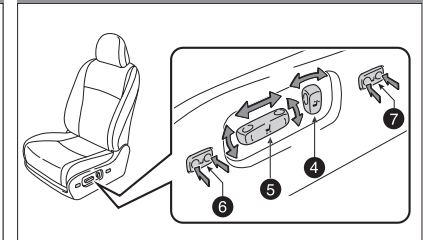
NOTE: If battery is disconnected, the power back door needs to be reinitialized. Refer to the *Owner's Manual* for more details.

Seat adjustments-Front

Manual seat



Power seat

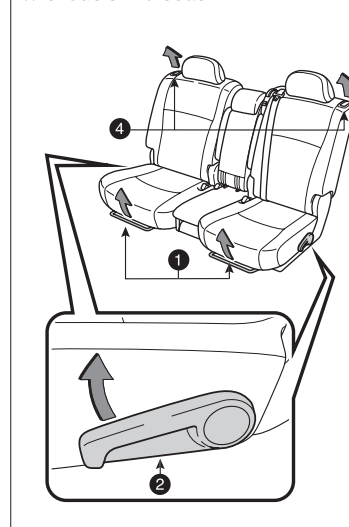


- 1 Seat position (forward/backward)
- 2 Seat cushion angle
- 3 Height crank (driver side only)
- 4 Seatback angle
- 5 Seat position, cushion angle and height
- 6 Driver seat leg support (if equipped)
- 7 Lumbar support (driver side only)

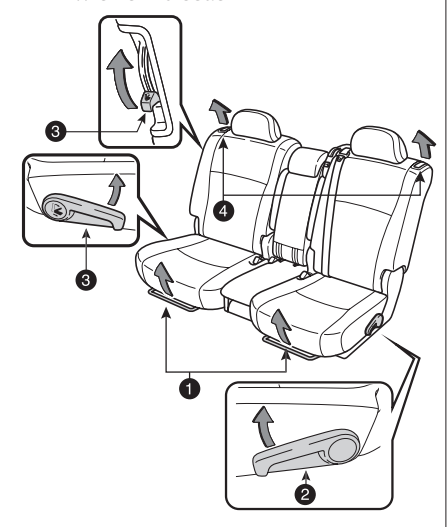
Seat adjustments-Rear

Second row seat

Without third seat



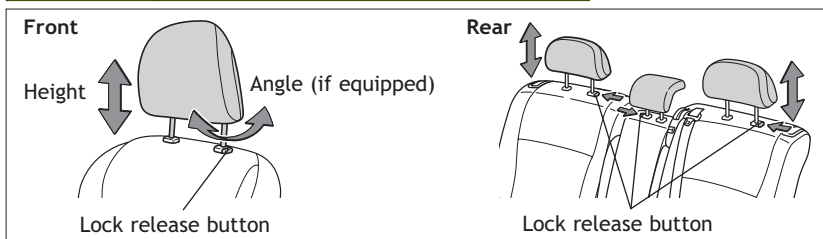
With third seat



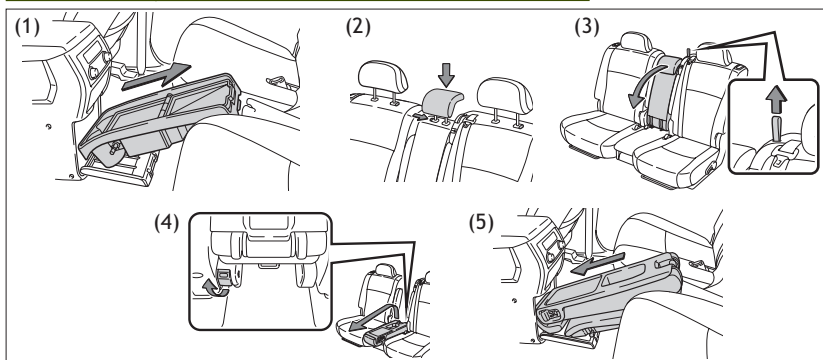
- 1 Seat position (forward/backward)
- 2 Seatback angle
- 3 Third seat access lever
- 4 Seatback release

Refer to the *Owner's Manual* for more details.

Seats-Head restraints



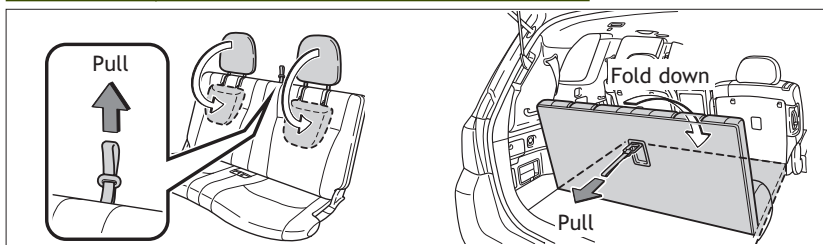
Seats-Removing Center-Stow™ second row seat



- (1) Remove the second row console from the front center console box.
- (2) Lower the center head restraint.
- (3) Pull the strap, then fold down the seatback.
- (4) Pull the lever behind the second center seat and lift the rear of the seat to remove.
- (5) Stow the seat in the front center console box.

NOTE: The second-row console can now be installed between the second row seats.

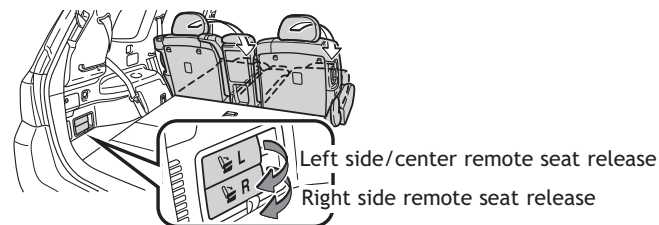
Seats-Stowing third row seats (if equipped)



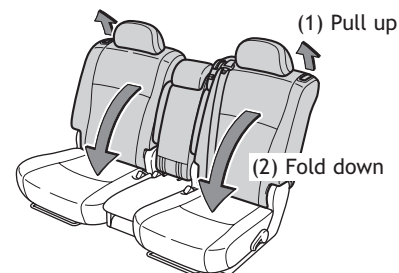
Refer to the *Owner's Manual* for more details.

Seats-Folding down second row seats (if equipped)

From outside

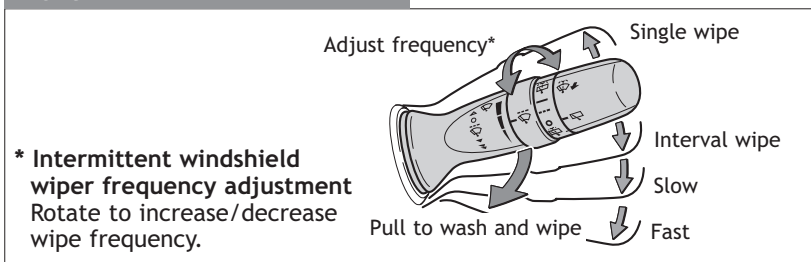


From inside

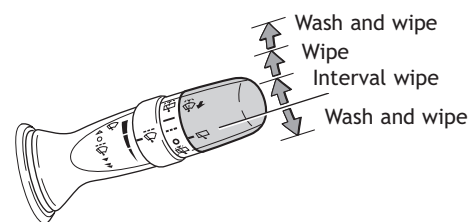


Windshield wipers & washers

Front

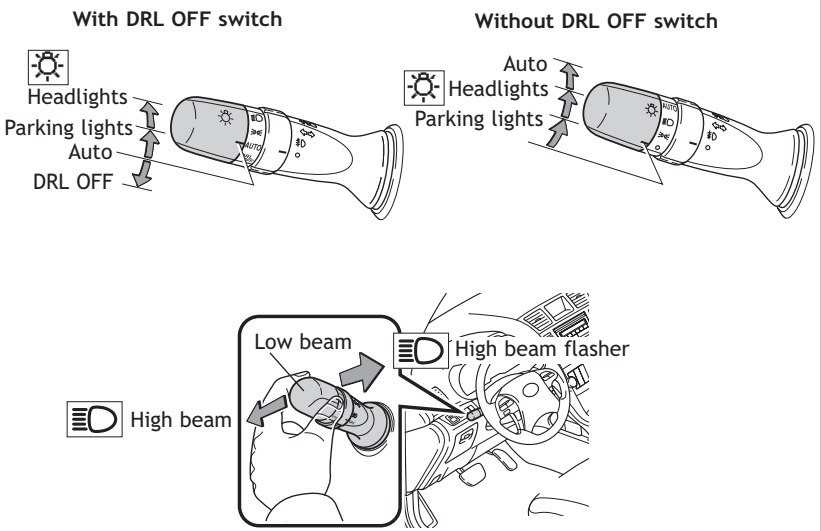


Rear



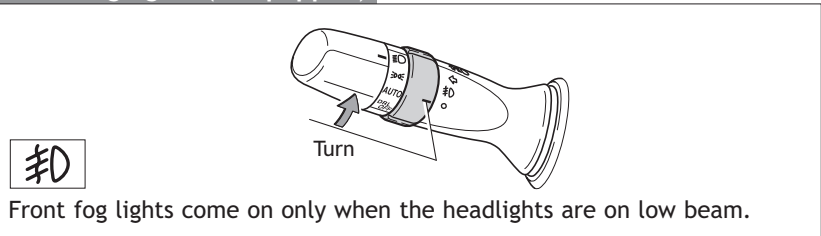
Lights & turn signals

Headlights

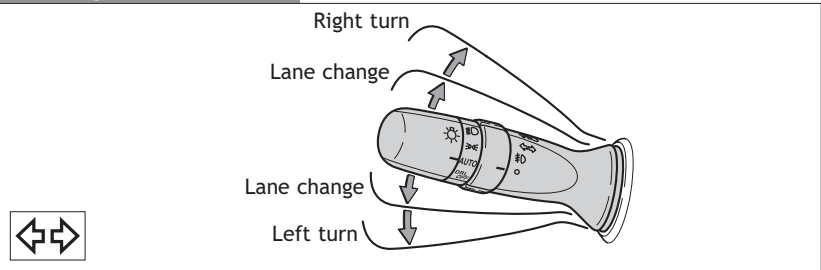


- Daytime Running Light system (DRL) (if equipped) Automatically turns on the turn signal lights at a reduced intensity.
- Automatic light cut off system Automatically turns lights off after a delay of 30 seconds.

Front fog lights (if equipped)

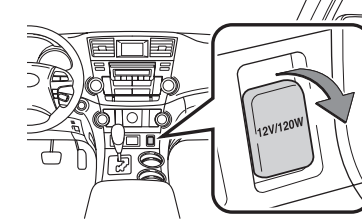


Turn signals

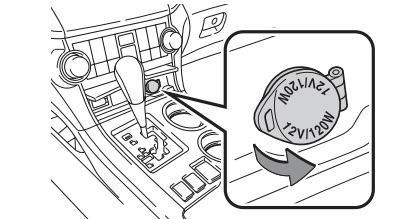


Power outlets-12V DC

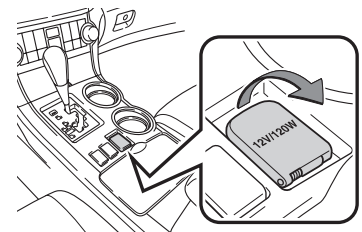
Instrument panel (with seat heater)



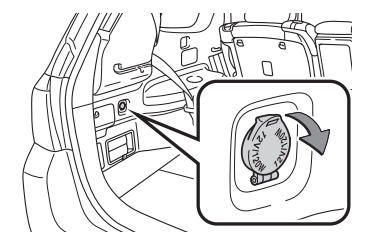
Instrument panel (without seat heater)



Center console

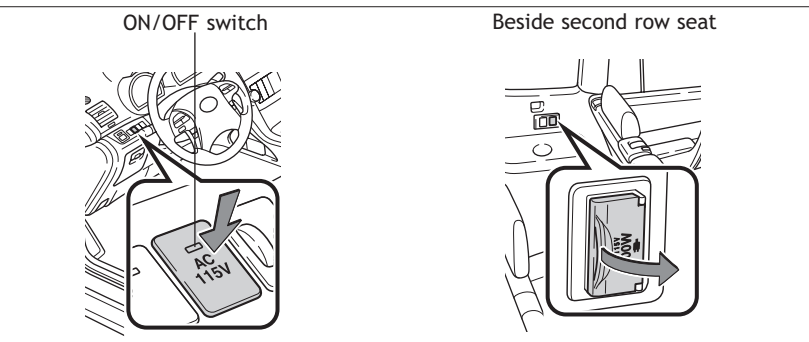


Luggage compartment



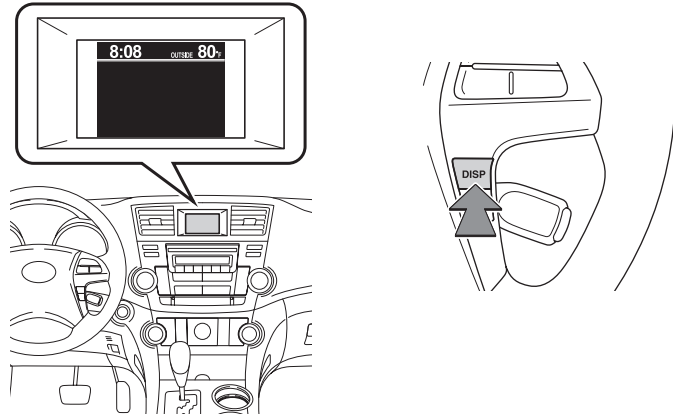
Key/Engine switch must be in the "ACC" or "ON" position to be used.

Power outlets-115V AC (if equipped)



Key/Engine switch must be in the "ON" position to be used.

Multi-information display (if equipped)



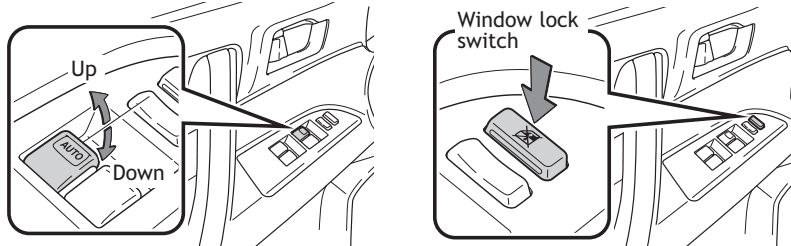
Push “DISP” to change information in the following:

- (1) Average gas mileage after refueling
- (2) Current gas mileage
- (3) Miles left on remaining fuel
- (4) Driving distance from engine start
- (5) Average gas mileage
- (6) Average gas mileage history

Push and hold “DISP” to set up the displays and the rearview monitor displays.

Windows-Power

Driver side

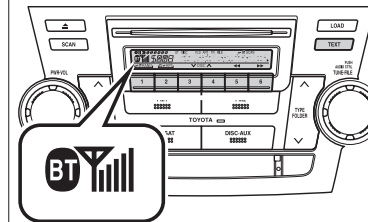


Automatic operation (Driver's window only) Push the switch completely down or pull it completely up and release to fully open or close. To stop window midway, lightly push the switch in the opposite direction.

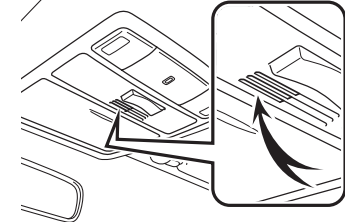
Window lock switch Deactivates all passenger windows. Driver's window remains operable.

Telephone controls (Bluetooth®) (if equipped)

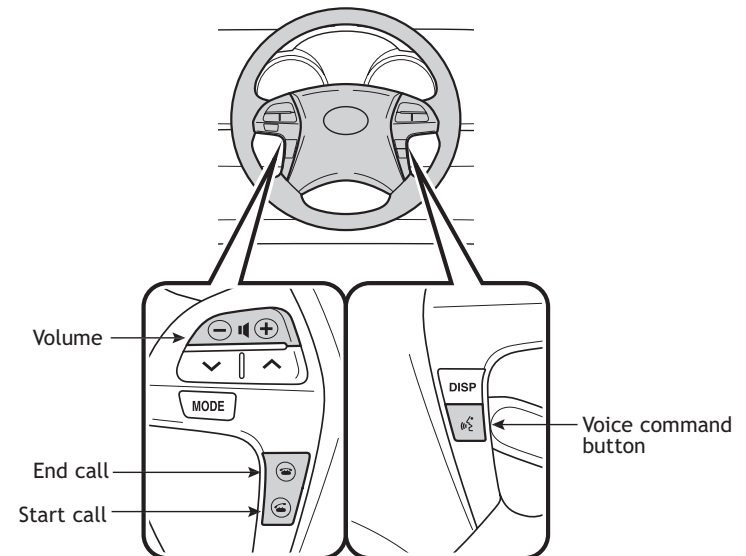
Audio unit



Microphone



Steering wheel telephone controls

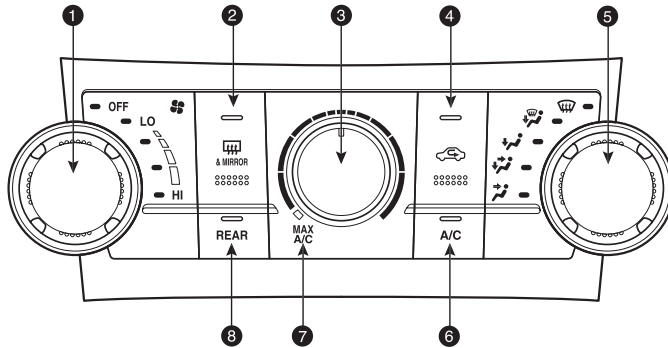


Bluetooth® technology allows dialing or receipt of calls without taking hands from the steering wheel or using a cable to connect the telephone and the system.

Refer to “Hands-free phone system (for cellular phone),” Section 3-4 in the *Owner's Manual* for more details.

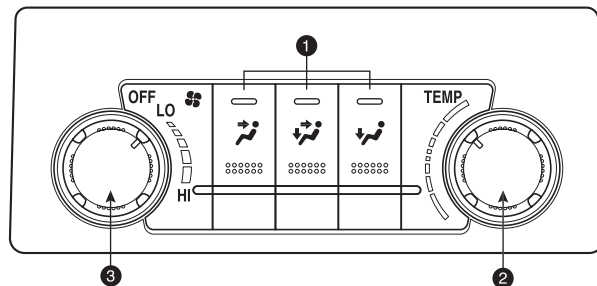
Air Conditioning/Heating

Front manual Air Conditioning



- ① Fan speed
- ② Outside rearview mirror (if equipped)/Rear window defogger
- ③ Temperature selector
- ④ Fresh or recirculated cabin air
- ⑤ Airflow vent
In “” or “” mode, use fresh air (“” indicator OFF) to reduce window fogging.
- ⑥ Air Conditioning ON/OFF
Use fresh air to quickly cool interior, then change to recirculate for cooler air.
- ⑦ Use for quick cooling. MAX A/C changes air intake to recirculate.
- ⑧ Rear Air Conditioning ON/OFF

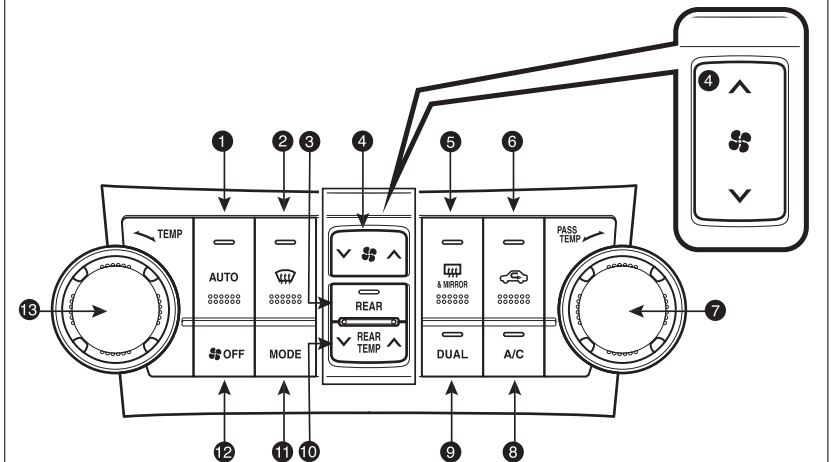
Rear manual Air Conditioning (if equipped)



- ① Airflow vent
- ② Temperature selector
- ③ Fan speed

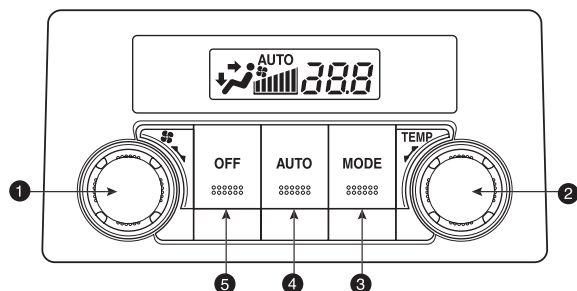
Front automatic Air Conditioning

With rear Air Conditioning



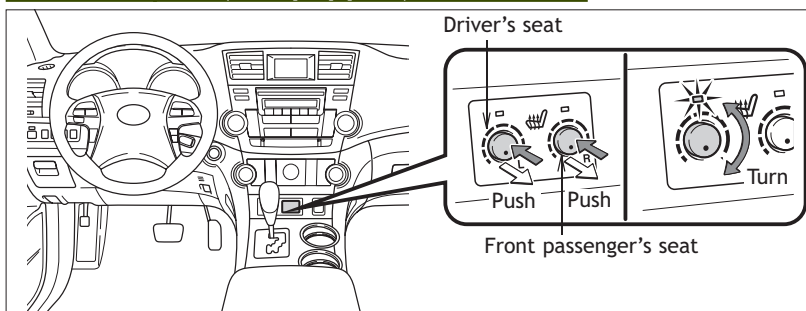
- ① Automatic climate control ON
Adjusting the temperature setting will cause the airflow vents, air intake and fan to adjust automatically.
- ② Windshield airflow/defogger
- ③ Rear Air Conditioning ON/OFF
- ④ Fan speed
- ⑤ Outside rearview mirror (if equipped)/Rear window defogger
- ⑥ Fresh or recirculated cabin air
- ⑦ Temperature selector (front passenger side)
- ⑧ Air Conditioning ON/OFF
- ⑨ “DUAL” button
Indicator ON: Separate temperature settings for driver, front passenger and rear passengers.
Indicator OFF: Synchronize temperature settings for driver and all passengers.
- ⑩ Temperature selector (rear passenger)
- ⑪ Airflow vent
In “” or “” mode, use fresh air (“” indicator OFF) to reduce window fogging.
- ⑫ Climate control OFF
- ⑬ Temperature selector (driver side)

Rear automatic Air Conditioning (if equipped)



- ① Fan speed
- ② Temperature selector
- ③ Airflow vent
- ④ Automatic climate control ON
- ⑤ Climate control OFF

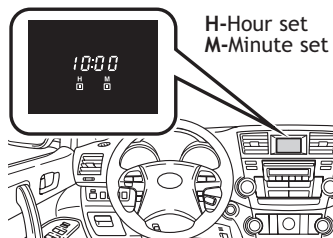
Seat heaters (if equipped)



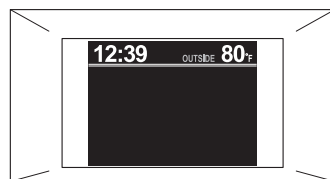
Push knob to pop the controller out. Turn clockwise for heater.

Clock

Without multi-information display



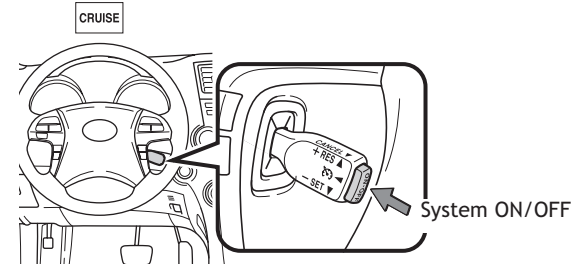
With multi-information display



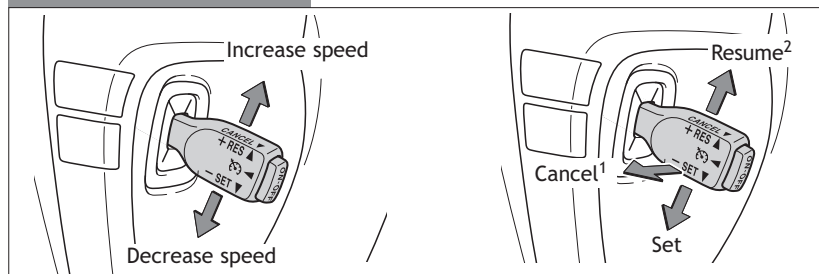
With multi-information display Press and hold “DISP” button. Select “CLOCK” on menu screen. Adjust as indicated on screen.

Cruise control

Turning system ON/OFF



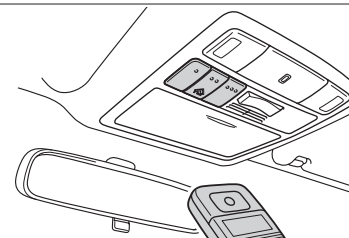
Functions



¹ The set speed may also be cancelled by depressing the brake pedal.

² The set speed may be resumed once vehicle speed exceeds 25 mph.

Garage door opener (HomeLink®)* (if equipped)



Garage door openers manufactured under license from HomeLink® can be programmed to operate garage doors, estate gates, security lighting, etc.

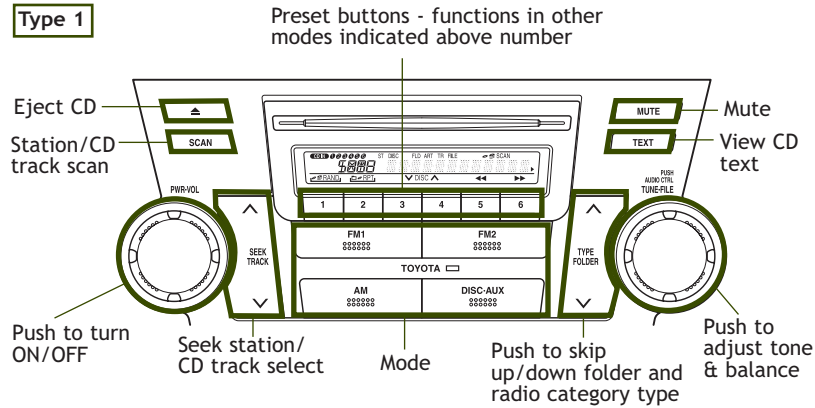
Refer to “Garage door opener,” Section 3-7 in the *Owner’s Manual* for more details.

For programming assistance, contact the Toyota Customer Experience Center at 1-800-331-4331, or visit <http://www.homelink.com>.

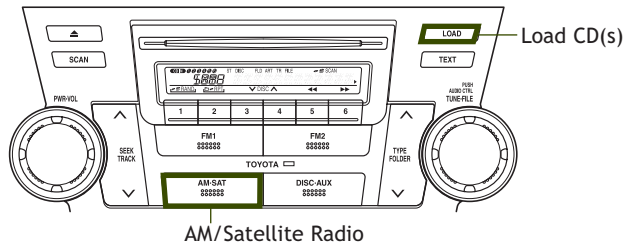
* HomeLink® is a registered trademark of Johnson Controls, Inc.

Audio

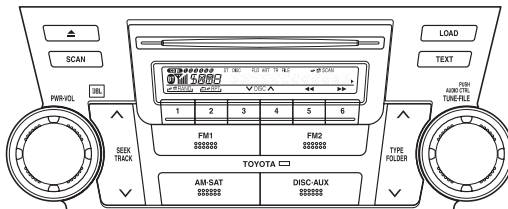
Type 1



Type 2 additional functions



Type 3 (with JBL speakers and Bluetooth® function)



CD PLAYER

To scan tracks on a disc Push and hold “SCAN.” Push again to hold selection.

CD changer (Types 2 and 3 only)

-To load one disc Push “LOAD” and insert one disc.

-To load multiple discs Push and hold “LOAD” until you hear a beep. Insert one disc. Shutter will close and then re-open for next disc.

To select a file (MP3/WMA only) Turn “TUNE·FILE.”

To select a folder (MP3/WMA only) Push either side of “FOLDER.”

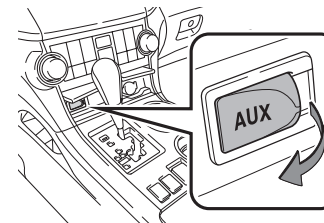
RADIO

To preset stations Tune in the desired station and hold down a preset button (1-6) until you hear a beep. Push desired preset button (1-6) to select.

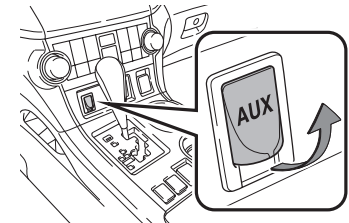
To scan stations Push and hold “SCAN” to scan preset stations. Push again to hold selection.

AUX audio jack

Without seat heater



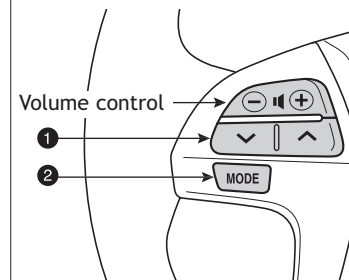
With seat heater



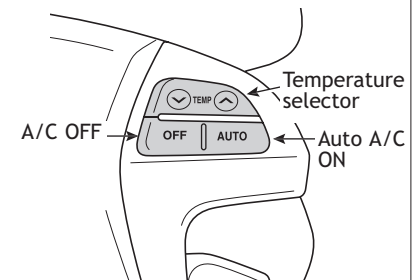
By inserting a mini plug into the AUX audio jack, you can listen to music from a portable audio device through the vehicle’s speaker system while in AUX mode.

Steering wheel controls (if equipped)

Audio control



A/C control



1 “V A”

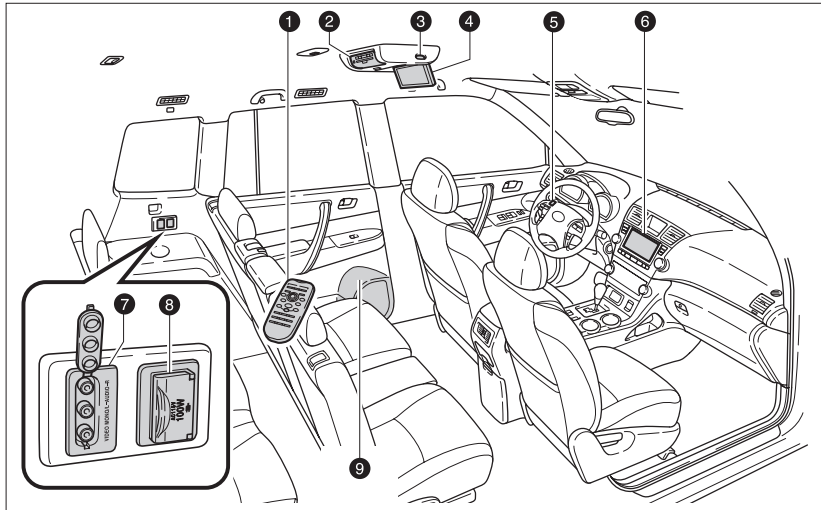
-In radio mode Push to select a preset station; push and hold to seek the next strong station.

-In CD mode Push to skip up or down to next/previous track.

2 “MODE”

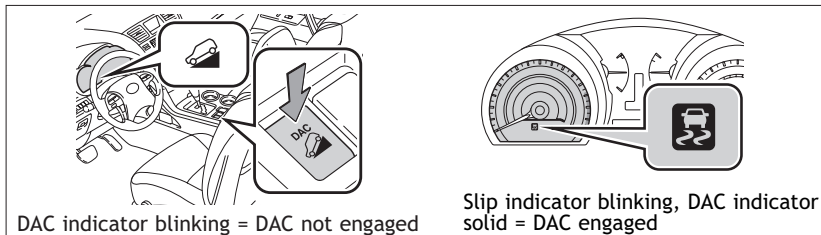
Push to turn audio ON and select an audio mode. Push and hold to turn the audio system OFF.

Rear seat entertainment system (if equipped)



- 1 Remote control
- 2 DVD player
- 3 Headphone volume control and headphone jacks
- 4 DVD screen
- 5 115V AC Power outlet ON/OFF switch
- 6 Front audio system
- 7 A/V input adapter
- 8 115V AC Power outlet
- 9 Wireless headphones

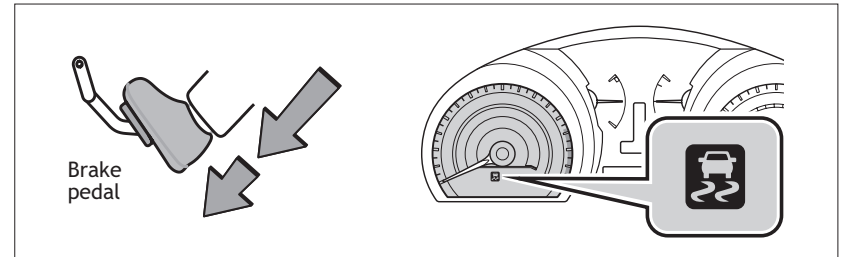
Downhill Assist Control system (DAC) (if equipped)



DAC helps the vehicle to descend steep hills while maintaining a low speed without brake pedal operation. Press the "DAC" button (system will engage only when shifter is in S1 or R mode). Pressing the button again will turn system off.

Refer to the *Owner's Manual* for more details.

Hill-start Assist Control (HAC)

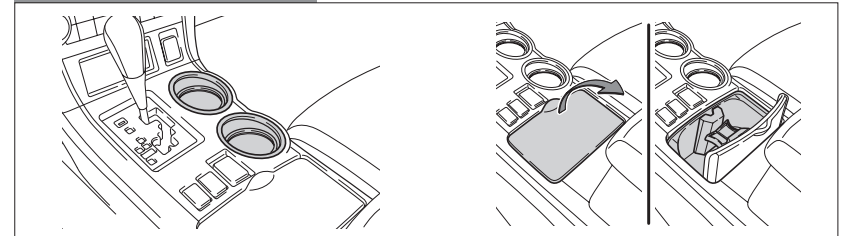


HAC helps prevent rolling backwards on an incline. To engage, push further down on brake pedal while at a complete stop until a beep sounds and slip indicator illuminates. HAC holds for approximately 2 seconds after releasing brake pedal.

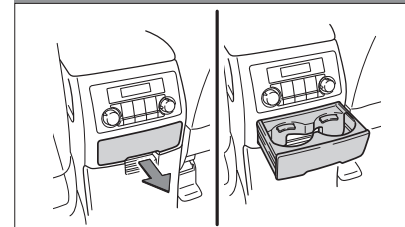
Refer to the *Owner's Manual* for more details.

Cup holders

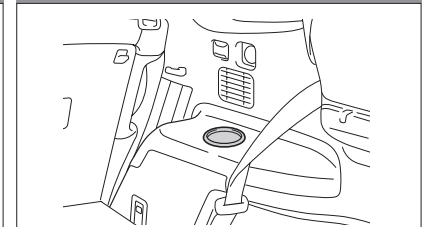
Front



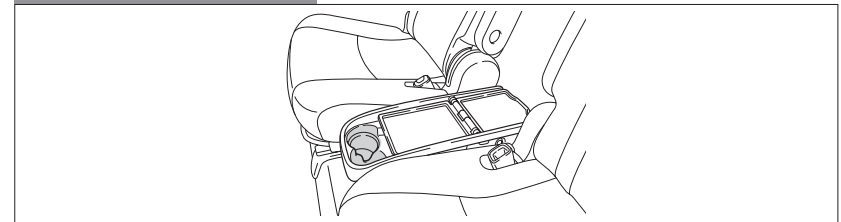
Console box



Rear

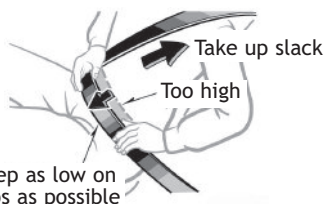


Side table



SAFETY AND EMERGENCY FEATURES

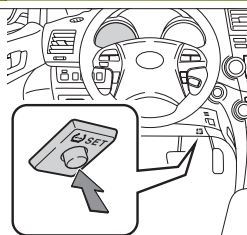
Seatbelts



If belt is fully extended, then retracted even slightly, it cannot be re-extended beyond that point, unless fully retracted again. This feature is used to help hold child restraint systems securely.

To find more information about seatbelts, and how to install a child restraint system, refer to the *Owner's Manual*.

Tire Pressure Monitoring (warning) System



System reset initialization

1. Push and hold "SET" button until the indicator blinks 3 times.
2. Wait a few minutes to allow initialization to complete.

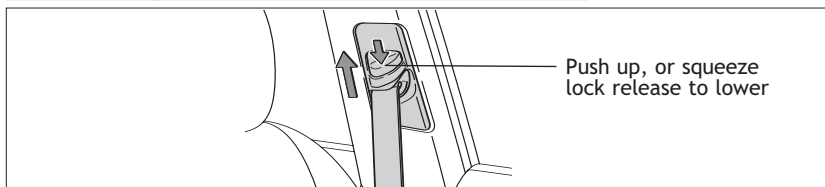
After adjusting tire pressures, or after tires have been rotated or replaced, turn the ignition switch to "ON" and press and hold the "SET" button until indicator blinks three times. Let the vehicle sit for a few minutes to allow initialization to complete.

Refer to the load label on the door jamb or the *Owner's Manual* for tire inflation specifications.

If the tire pressure indicator flashes for more than 60 seconds and then remains on, take the vehicle to your local Toyota dealer.

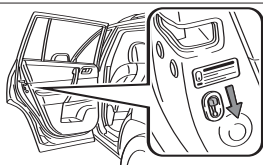
Note: The warning light may come on due to temperature changes or changes in tire pressure from natural air leakage. If the system has not been initialized recently, setting the tire pressures to factory specifications should turn off the light.

Seatbelts-Shoulder belt anchor



Doors-Child safety locks

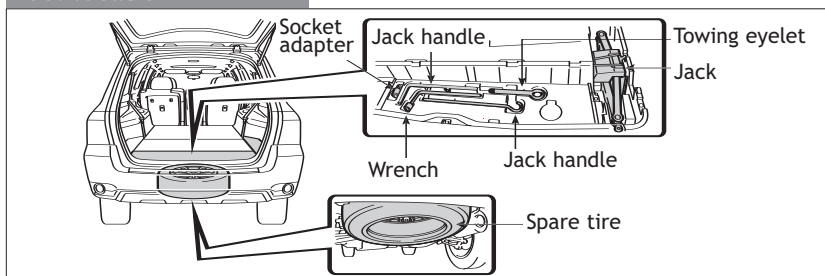
Rear door



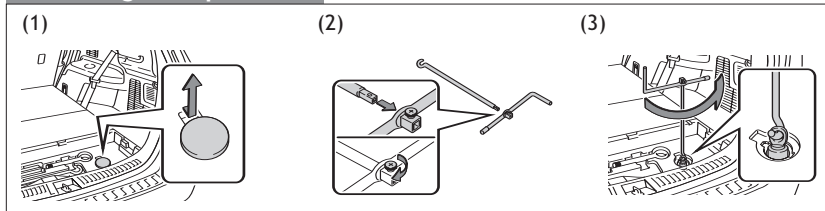
Moving the lever to “LOCK” will allow the door to be opened only from the outside.

Spare tire & tools

Tool location



Removing the spare tire



- (1) Remove the cover under the center deck board to find the spare tire clamp bolt.
- (2) Assemble the jack handle.
- (3) Put the socket adapter on the spare tire clamp bolt. Loosen the bolt by turning it counterclockwise with the jack handle.

Refer to the *Owner's Manual* for tire changing and jack positioning procedures.



Customer Experience Center
1-800-331-4331